

PARKING RULES & PENALTIES

This Fact Sheet provides an overview of some of the penalties that apply to illegal parking on all roads **EXCEPT School Zones** - from July 1 2011.

If you stop in a 'No Stopping' area
- Fine from \$206



You must not stop your vehicle on a length of road or in an area in which a No Stopping sign applies.

No Stopping includes when the vehicle is not moving but the engine is still running.

If you disobey a 'No Parking' sign
- Fine from \$88



You are allowed to stop your vehicle only to set down or pick up passengers, or goods.

Your vehicle must not stop for more than 2 minutes. The driver must not be more than 3 metres from the vehicle.

If you stop on or near a 'Pedestrian Crossing' - Fine from \$265 + 1 demerit points

You must not stop or park your vehicle on or near a pedestrian crossing to drop people off or pick them up.

If you are Double Parked - Fine from \$206

You must not stop your vehicle or park in the middle of the road to drop people off or pick

them up. Always stop or park legally and safely at the edge of the road or in a parking area.

If you stop in a 'Bus Zone'
- Fine from \$206



You must not stop or park your vehicle in a bus zone for any reason.

This includes when the vehicle is not moving but the engine is still running.

A 'Kiss & Ride' area is always within a 'No Parking' zone. The 'No Parking' rules apply to all 'Kiss & Ride' areas.

- Fine from \$88



You are allowed to stop your vehicle only to set down or pick up passengers, or goods.

Your vehicle must not stop for more than 2 minutes. The driver must not be more than 3 metres from the vehicle.



**When you obey the parking rules,
it makes it easier to see what
pedestrians are doing.**

More information over the page

PARKING RULES & PENALTIES

ROAD SAFETY FACT SHEET

Note: fines subject to change without notice. Current to 30 June 2012.

If you stop in a parking area for the Disabled - Fine from \$441



DISABLED PARKING ONLY

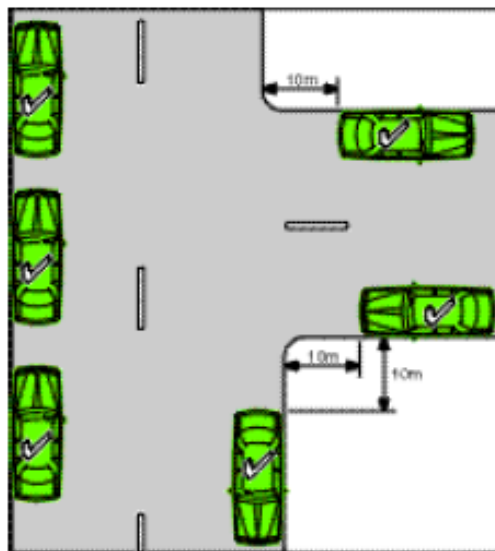
You must not stop or park your vehicle in an area displaying the Disabled Parking sign unless your vehicle is displaying a current mobility parking scheme (MPS) card AND you are carrying a person with a disability.

You must not stop or park your vehicle within 3 metres of the continuous dividing line or dividing strip unless a sign allows you to park there.

If you stop in, on or near an intersection - Fine from \$206

Unless a sign allows you to park there, you must not stop or park your vehicle:

- within 20 metres of an intersecting road at an intersection with traffic lights.
- within 10 metres of an intersecting road at an intersection without traffic lights including roundabouts.



There are many more parking rules that could affect you. For more information see the RTA website www.myrta.com

If you stop on a road with a continuous yellow edge line - Fine from \$206

You must not stop or park your vehicle on a road with the continuous yellow edge line painted in the kerb.

If you stop on a footpath or nature strip - Fine from \$88

You must not stop or park your vehicle on a footpath or nature strip in a built up area. This includes stopping with two wheels on the road and two on the path or nature strip.

If you park too close to the road dividing line or strip - Fine from \$206

